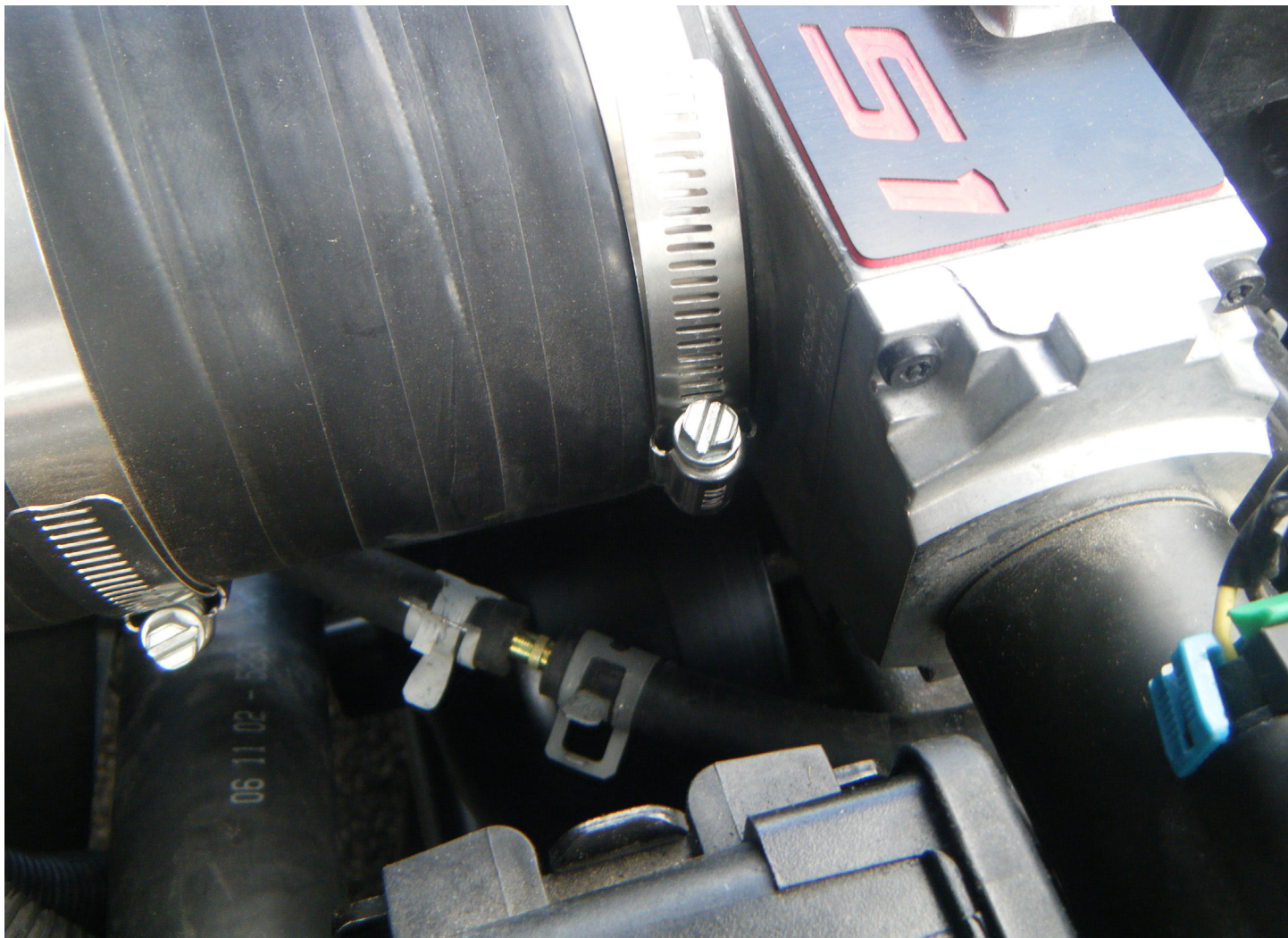


LS1/LS6 Throttle Body Coolant Bypass Kit (Various Applications)



PN: L300145297

Lingenfelter Performance Engineering
1557 Winchester Road
Decatur, IN 46733
(260) 724-2552
(260) 724-8761 fax
www.lingenfelter.com
Release date 5/11/2012

Parts List

LS1/LS6 Throttle Body Coolant Bypass Kit

#	Description
1	1/4" hose coupler, stainless
2	rubber cap plug, 1/4", EPMD
2	Oetiker clamps, 11.3mm

Tools & Materials Required

- Pliers
- Oetiker clamp pliers or side cutters

Optional Items		
#	Description	Part number
1	90mm 4 bolt C5 corvette throttle body	L270010197

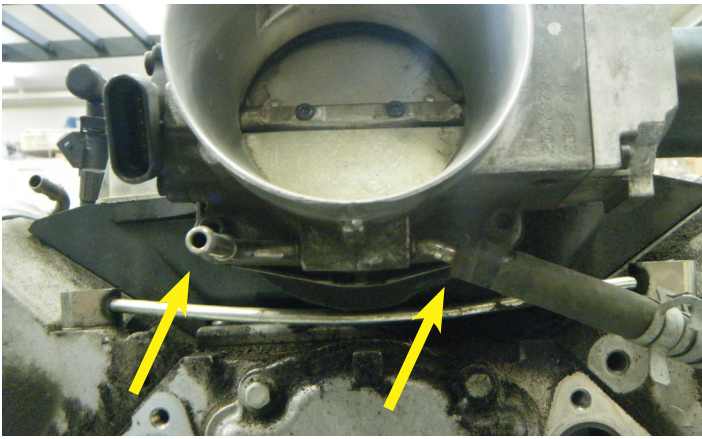
Thank you for purchasing the Lingenfelter Performance Engineering (LPE) LS1/LS6 throttle body coolant bypass kit. This kit is designed for use on any vehicle with an Original Equipment Manufacturer (OEM) LS1 or LS6 throttle body. This kit reroutes the engine coolant away from the throttle body, reducing the temperature of the air flowing through the air intake.

Read the entire instruction manual before beginning installation. Some stock parts will be used in reassembly.

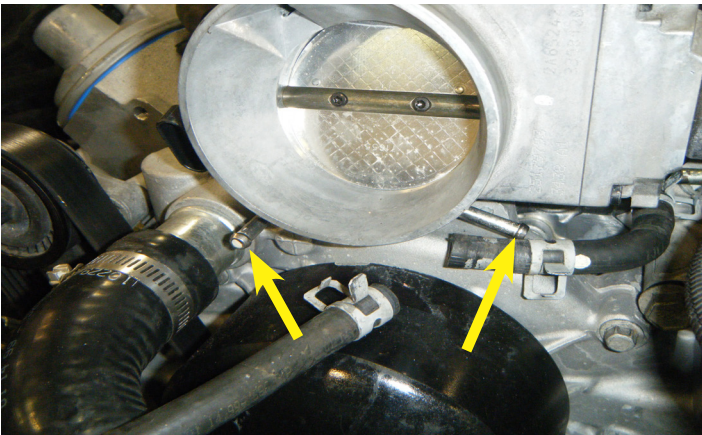
This kit is required for the installation of the LPE 90mm 4 bolt C5 Corvette throttle body (PN: L270010197).

In designing the LS1/LS6 throttle body, GM chose to run the engine coolant through the throttle body in order to reduce the chance of the throttle body icing over in extremely cold weather. If the vehicle might be driven in temperatures approaching 32 degrees Fahrenheit or below, it may be necessary to keep the engine coolant running through the throttle body until the temperature of the operating environment increases.





1. Un-clamp the two (2) coolant hoses that run to the bottom of the throttle body as shown.

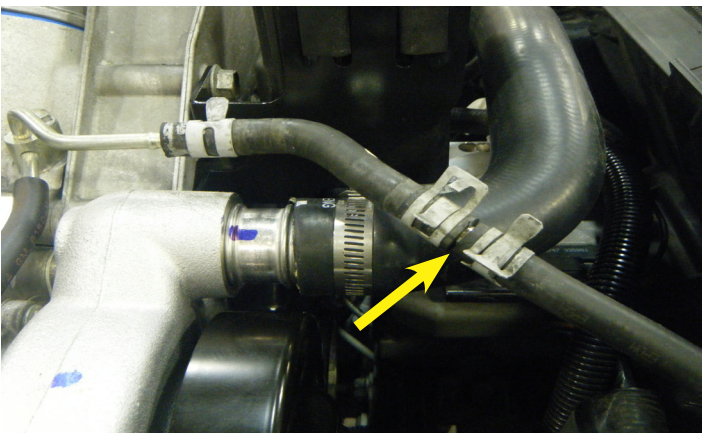


2. Using the supplied rubber cap plugs, plug both hose nipples on the throttle body, as shown in the following step.



3. The adjacent illustration shows the rubber cap plugs installed on the lower throttle body hose nipples.

OPTIONAL STEP: Using Oetiker clamp pliers or side cutters, install the supplied Oetiker clamps to secure the cap plugs to the throttle body. If you are using side cutters, take care not to shear the metal on the oetiker clamp.



4. Connect the 90 degree bypass hose to the radiator hose using the supplied hose joiner and the OEM constant tension clamps.

The installation of the LPE throttle body coolant bypass kit is now complete.

For additional product installation information and technical support, contact LPE or your LPE products distributor. You can also find technical support and usage discussions regarding this product and many other LPE products in our Internet forums:

<http://www.lingenfelter.com/LPEforumfiles>



Lingenfelter Performance Engineering
1557 Winchester Road
Decatur, IN 46733
(260) 724-2552
(260) 724-8761 fax
www.lingenfelter.com