

## C7 Corvette 1/4" Front Subframe Spacer Kit



PN: L510070114

Lingenfelter Performance Engineering  
1557 Winchester Road  
Decatur, IN 46733  
(260) 724-2552  
(260) 724-8761 fax  
[www.lingenfelter.com](http://www.lingenfelter.com)  
Release date: 6 July 2015

## Parts List

### C7 Corvette 1/4" Front Subframe Spacer Kit

#	Description	Part number
4	1/4" spacer for subframe, rear (2.1" outside diameter)	XX06699-0007
2	1/4" spacer for subframe, front (1.1" outside diameter)	XX06699-0008
1	Lingenfelter Decal	L920010000
1	Instructions	

#### Tools & Materials Required

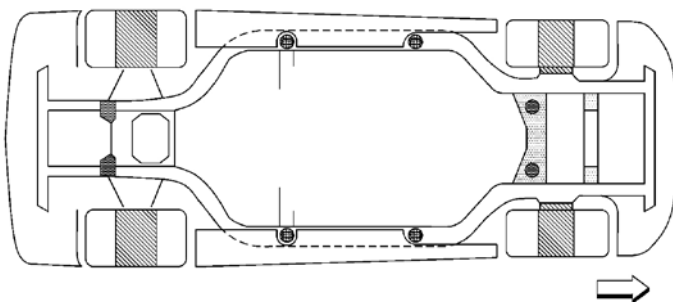
- (2) temporary spacers, 3"x1-1/2"x1/2" block, wood or plastic
- Jack Stands
- Torque wrench
- Metric deep socket set
- Pry bar or equivalent
- Ratchet

Thank you for purchasing the Lingenfelter Performance Engineering (LPE) C7 Corvette front subframe spacer kit. This kit will raise the frame of the C7 Corvette by roughly 1/4" in relation to the engine, which will in turn provide added clearance above the engine for a supercharger or other various engine components. The C7 Corvette front subframe spacer kit offers an alternative to purchasing an aftermarket hood for applications where only a small amount (1/4" or less) of added hood clearance is required.

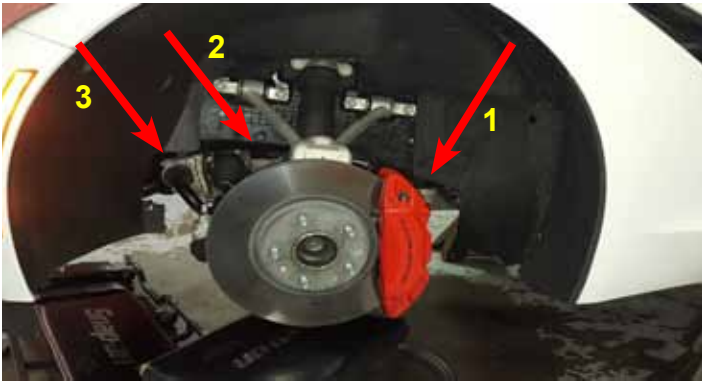
Read the entire instruction manual before beginning installation.



1. Open the hood. If you have been driving your vehicle, allow time for it to cool down before beginning this installation.



2. Raise the vehicle with a vehicle hoist or a jack and jackstands. Be careful to follow the GM lifting procedures on the Corvette due to the aerodynamic components being easily damaged and the low ride height of the vehicle.

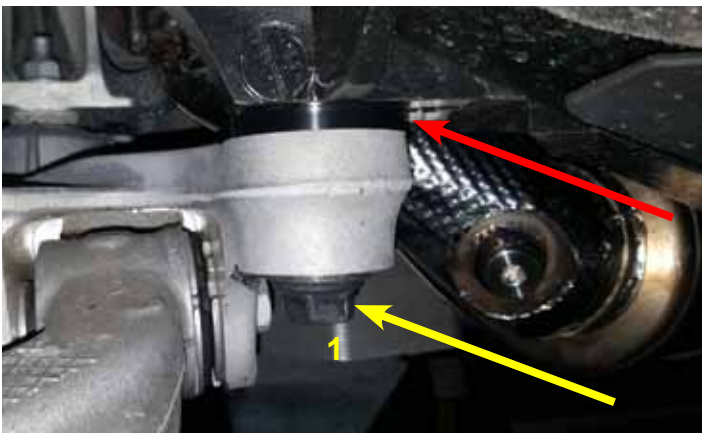


3. You will be installing three spacers on each side of the vehicle. The locations in the front wheel wells are indicated by the arrows. The number associated with each subframe bolt will be mentioned later in the instructions.

4. Loosen but do not remove the subframe bolts. There are 3 bolts on each side of the vehicle. The bolts must be loosened enough for the subframe to drop by 1/2".

5. You may have to pry down the subframe from the body using a pry bar as leverage. A temporary spacer may be used on each side of the vehicle between the subframe and the body to hold the subframe down until you are prepared to install the subframe spacers.

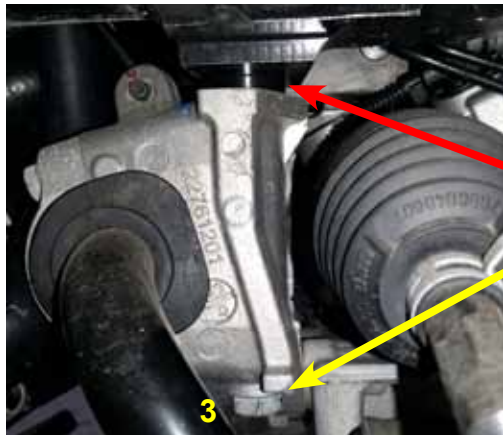
**WARNING: DO NOT PLACE YOUR FINGERS BETWEEN THE SUBFRAME AND THE BODY.**



6. Remove the subframe bolt labeled 1. Insert one (1) of the smaller spacers (XX06699-0007) between the body and the subframe. Re-install the bolt but do not completely tighten.



7. Remove the subframe bolt labeled 2. Insert one (1) of the smaller spacers (XX06699-0007) between the body and the subframe. Re-install the bolt but do not completely tighten.



8. Remove the subframe bolt labeled 3. Insert one (1) of the larger spacers (XX06699-0008) between the body and the subframe. Re-install the bolt but do not completely tighten.

9. Repeat on the other side of the vehicle.

10. Torque the subframe bolts on each side of the vehicle.

Bolt 1: 160 Nm (118 ft lbs).

Bolt 2: 160 Nm (118 ft lbs).

Bolt 3: 110 Nm (81 ft lbs).

**GM service information specifies that vehicle alignment is not required if you are lowering or dropping the subframe. However, you are removing bolts that pertain to the alignment of your vehicle. It is advised that you check your vehicle's alignment.**

**Installation of the C7 1/4" front subframe spacer kit is now complete.**

**For additional product installation information and technical support, contact LPE or your LPE products distributor. You can also find technical support and usage discussions regarding this product and many other LPE products in our Internet forums:**

<http://www.lingenfelter.com/LPEforumfiles>

1557 Winchester Road  
Decatur, Indiana 46733  
(260) 724-2552 phone  
(260) 724-8761 fax  
[www.lingenfelter.com](http://www.lingenfelter.com)