

LINGENFELTER

P E R F O R M A N C E E N G I N E E R I N G

2004-2007 and 2008-2012 CTS Pedal Cover Kit (MT/AT Applications)



PN's: L820110709 (2008-2012 CTS MT Wide Pedal)

L820120709 (2008-2012 CTS MT)

L820130709 (2008-2012 CTS AT)

L820090704 (2004-2007 CTS MT Wide Pedal)

L820100704 (2004-2007 CTS MT)

Lingenfelter Performance Engineering
1557 Winchester Road
Decatur, IN 46733
(260) 724-2552
(260) 724-8761 fax
www.lingenfelter.com
Release date: 6/4/2012

Parts List

LPE CTS Pedal Kit Installation Instructions (MT/AT Applications)

2008-2012 CTS Pedal cover kit MT Wide Gas Pedal L820110709

#	Description
1	Wide gas pedal cover
1	Brake pedal cover
1	Clutch pedal cover
1	Parking brake cover (not used on 2009-2012 CTS-V)
1	Foot rest cover
8	8 x 1/2" self tapping countersink screws
8	8-32 lock nuts
8	8-32 x 3/4" bolts

2008-2012 CTS Pedal cover kit MT Standard Gas Pedal L820120709

#	Description
1	Standard gas pedal cover
1	Brake pedal cover
1	Clutch pedal cover
1	Parking brake cover (not used on 2009-2012 CTS-V)
1	Foot rest cover
8	8 x 1/2" self tapping countersink screws
8	8-32 lock nuts
8	8-32 x 3/4" bolts

2008-2012 CTS Pedal cover kit AT Standard Gas Pedal L820130709

#	Description
1	Standard gas pedal cover
1	Brake pedal cover
1	Foot rest cover
1	Parking brake cover (not used on 2009-2012 CTS-V)
8	8 x 1/2" self tapping countersink screws
6	8-32 lock nuts
6	8-32 x 3/4" bolts

2004-2007 CTS Pedal cover kit MT Wide Gas Pedal L820090704

#	Description
1	Standard gas pedal cover
1	Brake pedal cover
1	Clutch pedal cover
1	Parking brake cover
1	Foot rest cover
8	8 x 1/2" self tapping countersink screws
8	8-32 lock nuts
8	8-32 x 3/4" bolts

2004-2007 CTS Pedal cover kit MT Standard Gas Pedal L820100704

#	Description
1	Standard gas pedal cover
1	Brake pedal cover
1	Clutch pedal cover
1	Parking brake cover
1	Foot rest cover
8	8 x 1/2" self tapping countersink screws
8	8-32 lock nuts
8	8-32 x 3/4" bolts

2008-2012 CTS AT
L820130709



2008-2012 CTS MT
L820120709



2008-2012 CTS MT Wide
Pedal L820110709

Picture to be
added.

2004-2007 CTS MT Wide
pedal L820090704

Picture to be
added.

2004-2007 CTS MT Standard
pedal L820100704



Tools & Materials Required

- Drill
- 1/8" drill bit
- 3/16" drill bit
- Phillips screwdriver or drill bit
- 9mm wrench
- Safety glasses
- Flashlight
- Vacuum
- 3/32" Allen key (included)
- Center punch
- Silver marker

Read the entire instruction manual before beginning installation. Some stock parts will be used in reassembly.

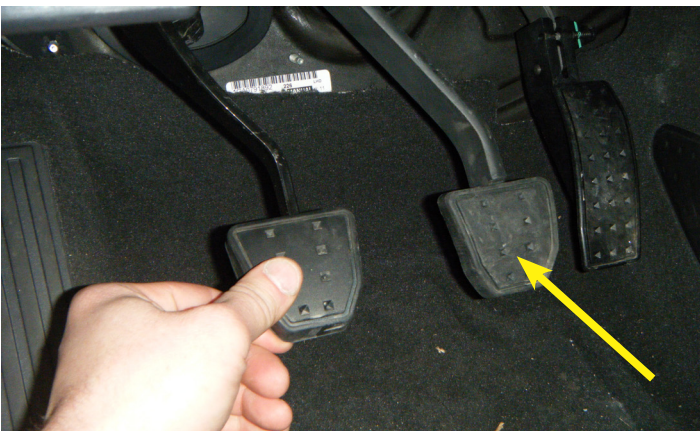
When referencing the side of the vehicle, the driver side of the vehicle is considered the left side and the passenger side of the vehicle is considered the right side of the vehicle.

The 2008-2012 CTS-V features a new electric parking brake system that utilizes a button near the shifter to engage the parking brake. The parking brake pedal cover included in the LPE 2008-2012 CTS pedal cover kits are for use on V6 equipped vehicles that have a foot-operated parking brake (2008-2012 V6 CTS models ONLY). If this kit is being installed on a 2008-2012 CTS-V, the parking brake pedal cover will not be installed.

WARNING: The 2004-2007 CTS MT wide pedal kit (PN: L820090704) and the 2008-2012 CTS MT wide pedal kit (PN: L820110709) are intended for installation in race vehicles ONLY. The width of the gas pedal is intended to better facilitate the Heel and Toe driving technique. The close proximity of the gas and brake pedal covers included in this kit can potentially lead to the gas pedal being inadvertently pressed while attempting to brake.



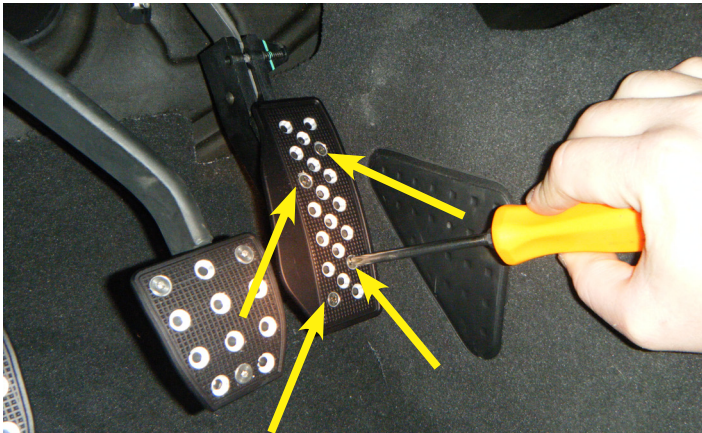
1. Remove the clutch pedal rubber cover if applicable by working the rubber tabs around the back of the pedal and pulling the cover away from the pedal.



2. Remove the brake pedal rubber cover by working the rubber tabs around the back of the pedal and pulling the cover away from the pedal.

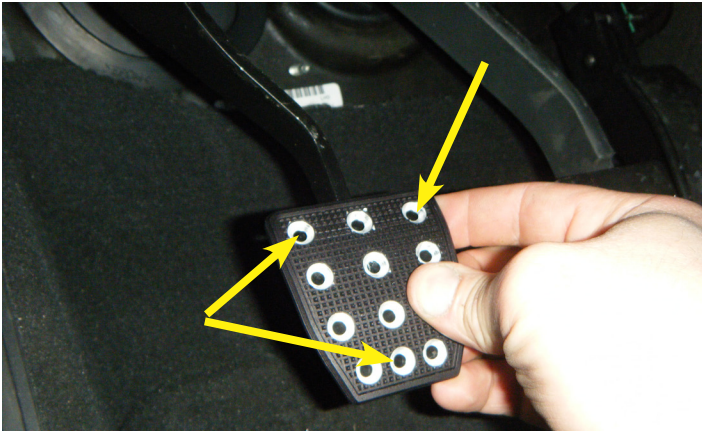


3. Line up the supplied gas pedal cover on the gas pedal and mark the location of the four screw holes with a silver marker, as shown in the illustration by the silver dots. Remove the gas pedal cover and drill a pilot hole at each marked location using a 1/8" drill bit.



4. Line up the accelerator pedal cover and, using the supplied self tapping screws, install the four (4) screws into the pedal cover holes shown by the yellow arrows.

NOTE: The accelerator pedal is made of a hard plastic. Take care not to overtighten the self tapping screws.



5. Line up the pedal cover on the brake pedal and, using a center punch, mark the location of the three (3) holes indicated on your brake pedal.

NOTE: The brake pedal cover and clutch pedal cover are dimensionally the same, so either one can be installed on either pedal.

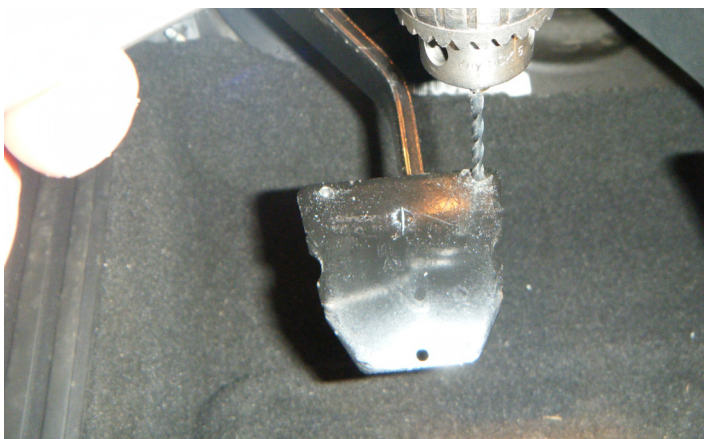


6. Make sure that the lower hole is below the bottom of the pedal arm (shown by the red line). The screws that will be used are only long enough to secure the pedal cover to the pedal plate.



7. Using a 1/8" drill bit and drill, drill the three (3) pilot holes in the locations that you marked with the center punch on your brake pedal.

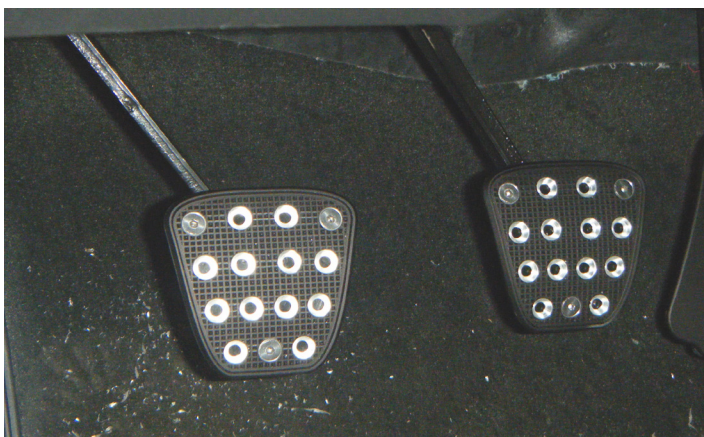
NOTE: Since the pedal is made of hard steel, LPE recommends using a pilot hole to make drilling the larger hole much easier.



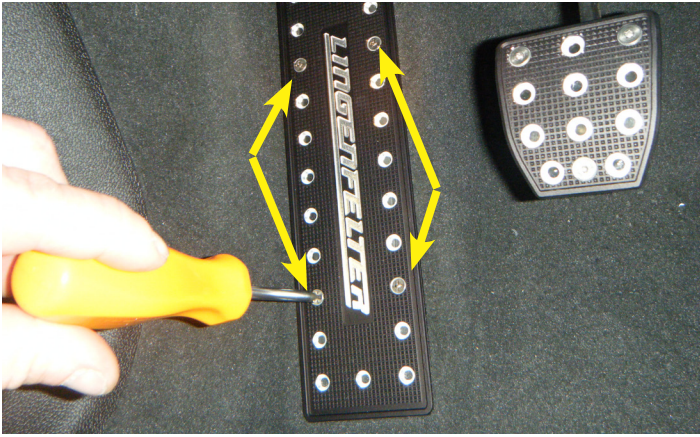
8. Using a 3/16" drill bit and drill, drill out the three (3) pilot holes created in the previous step.



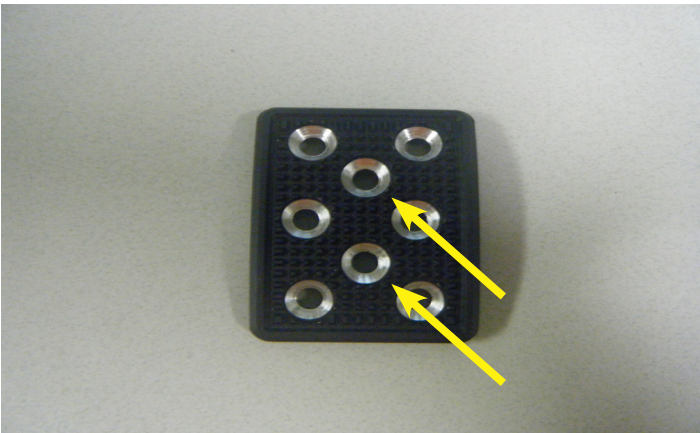
9. Using the supplied 3/32" Allen key and a 9 mm wrench, install the three (3) bolts and the three (3) locking nuts on the brake pedal.



10. Repeat steps 5-9 for the clutch pedal if installing this kit on a MT application. This illustration shows the brake and clutch pedal covers installed.



11. Mark the screw locations on the foot rest and drill the pilot holes using the 1/8" drill bit. Using a Phillips head screw driver and four (4) of the self tapping screws included, screw on the foot rest cover. Take care to ensure that the foot rest cover is on straight and that it covers the entire OEM foot rest.



12. If your vehicle has a parking brake pedal, install the parking brake pedal cover. The same procedure that was used to install the brake and clutch pedals is used to install the parking brake cover, except that only two (2) bolts and nuts will be installed at the locations in the picture.



13. Vacuum out the metal shards and clear away any other debris.



14. The installation of your LPE Pedal Covers is now complete.

NOTE: Make sure to check the pedals periodically to ensure that the fasteners have not loosened over time.

For additional product installation information and technical support, contact LPE or your LPE products distributor. You can also find technical support and usage discussions regarding this product and many other LPE products in our Internet forums:

<http://www.lingenfelter.com/LPEforumfiles>

Join us on Facebook!

<http://www.facebook.com/lingenfelter#!/lpehp>



Lingenfelter Performance Engineering
1557 Winchester Road
Decatur, IN 46733
(260) 724-2552
(260) 724-8761 fax
www.lingenfelter.com