

LINGENFELTER

P E R F O R M A N C E E N G I N E E R I N G

Lingenfelter Signature Series 2010-2012 Camaro SS Rear Valance



PN: L850161410

Lingenfelter Performance Engineering
1557 Winchester Road
Decatur, IN 46733
(260) 724-2552
(260) 724-0422 fax
www.lingenfelter.com
Release date 9-23-2011

Parts List

L850161410 Rear Valance

#	Description	Part number
1	LPE L28 Camaro rear valance	38-4-015
2	Exhaust tip intermediate extension tube (Diameter: 2.5")	XX03933-0006
2	M6 X 1mm nuts	44185
1	Lingenfelter logo paint mask	XX03933-0008
2	Chip resistant film	MMM84706

Tools & Materials Required

- Drill
- 0.25" drill bit
- Ratchet
- Ratchet extension
- 7mm socket
- 10mm socket
- 13mm deep well socket
- Small flat head screwdriver
- Pry tool
- Cut-off tool
- Torx 20 socket
- Phillips head screwdriver
- Hacksaw with metal cutting blade
- Welder (welding required for exhaust tip install)
- Torque Wrench

Optional Items

#	Part number	Description
1	L850141410	Front Chin Spoiler
1	L850171410	Rocker Covers
1	L850151410	Rear Deck Spoiler
1	L850131410	High Rise Ram Air Hood
1	L850181410	Grille with fiberglass insert
1	L850191410	Grille with CF insert
1	L850201410	Ram Air Hood with Window

Read the entire instruction manual before beginning installation. Some stock parts will be used in reassembly.

When referencing the side of the vehicle, the driver side of the vehicle is considered the left side and the passenger side of the vehicle is considered the right side of the vehicle.

Some installation pictures shown are with the body components unpainted. LPE recommends taking your vehicle to a professional painter to have your body components painted.

Welding will be required for steps 30-32 to install the exhaust extension tubes.



1. Pop the trunk lid. Prepare a clean work surface for when the rear bumper is removed. Using a pry tool (or equivalent) remove the pop rivets shown, located above the passenger and driver side tail lights. Make sure not to damage or lose them as they will be used later to re-install this cover.



2. Once the cover is removed, disconnect the tail light wiring harness electrical connectors on both sides of the bumper.



3. This illustration shows the location of the bolts that need to be removed in order to remove the bumper.



4. Using a Torx 20 socket and ratchet, remove the two (2) bolts inside the wheel wells on the driver and passenger sides of the vehicle.

5. This illustration shows the location of the red clips that hold the bumper in place. Be sure not to damage or lose these clips. If you are in need of a replacement clip, the part number is 92223721.



6. Remove the bumper by pulling outward on the driver and passenger side while lifting the bumper away from the vehicle.



7. With the help of an assistant, place the front bumper on a clean work surface as shown. You will need access to both the inside and outside of the bumper during this part of the installation.

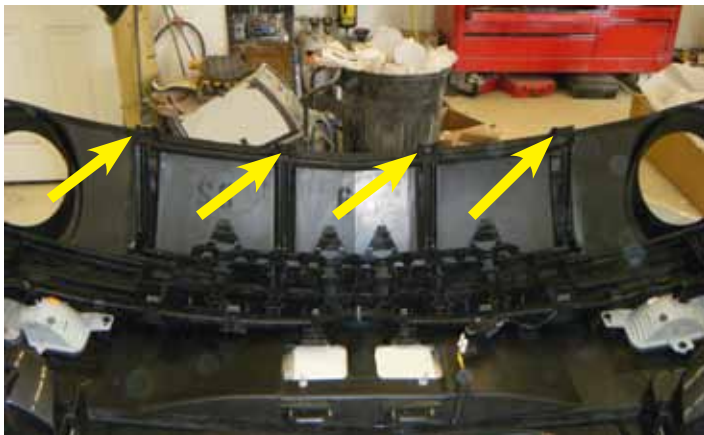


8. Un-install the passenger and driver side turn signal lights.





9. Remove the reverse light bulbs as well as the rear bumper wiring harness from the rear bumper.



10. Using a 7mm socket and ratchet, remove the four (4) bolts located on the inside of the rear fascia.



11. Using a 7mm socket and ratchet, remove the two (2) bolts located on the outside edges of the bumper. This illustration shows the location of the bolt on the passenger side.



12. Here is an illustration of the other outside bolt that needs to be removed on the driver side of the vehicle.



13. Remove the plastic valance energy absorber (already removed in this illustration) by un-clipping the clips that are shown by the arrows. There are four (4) clips total.

NOTE: There is a clip that is not shown in this illustration on the driver side of the bumper.



14. Remove the valance from the rear bumper. Be careful not to break the clips. The clips are illustrated by the arrows, but **NOTE** that not all clips are shown in this picture.

15. Line up the LPE rear valance on the bumper to locate the positions of the holes you will need to drill. This is much easier some one helping you.

16. Mark these spots with a marker or by putting paint on the end of the bolts that are mounted inside the LPE rear valance

17. Use a power drill (or equivalent) with a 0.25" drill bit to drill out the holes required.

18. Using a 7mm socket and ratchet, install the LPE valance using the holes that were drilled in the previous step. Torque the supplied M6 X 1mm nuts to 89 in-lb (10 N-m).



19. Using the M6 X 1mm studs located on the sides of the LPE rear valance, mark the locations on the rear bumper that will be drilled out in the next step.



20. Using a 0.25" drill bit and drill, drill out both sides of the bumper that were marked in the previous steps. You will want to drill from the inside of the bumper.





21. Re-install the valance energy absorber that was removed in step 12. The valance energy absorber will be modified in the next step. It will be permanently changed.



22. Using scotch tape (or equivalent), mark the cutoff points on the bottom of the valance support arms as shown. The dashes illustrate the cutting points.



23. Using a cut-off tool (or equivalent), cut the braces at the outermost edge of the tape. This cut is not required to be done while still installed on the bumper.

CAUTION: Be careful when modifying the valance energy absorber. The bumper and the valance can easily be damaged during this step.



24. This is an illustration of the valance energy absorber after it has been modified.



25. Re-install the passenger and driver side reverse lights.



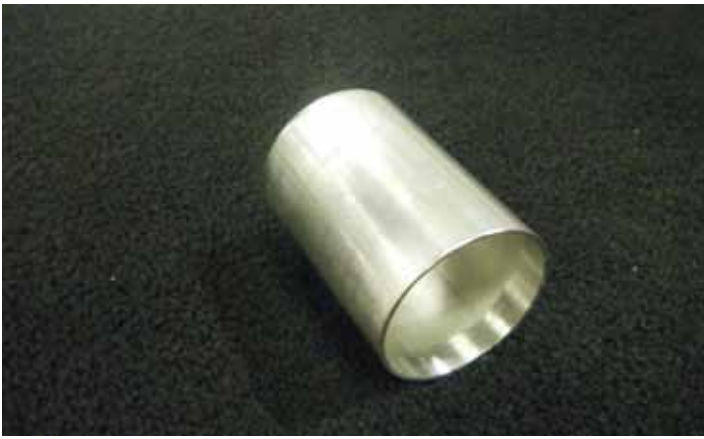
26. Re-install the passenger and driver side turn signals.



27. Re-connect the wiring harness electrical connector that was removed in step 8.



28. The LPE valance sits farther back from the OEM GM valance. Because of this the exhaust tips on the stock OEM exhaust and some aftermarket exhausts will need to be relocated. To do this you will need to cut the exhaust tips and weld the supplied extensions in place. The supplied extensions are designed to work with the stock exhaust and may work with some aftermarket exhausts. Custom extensions may be needed for some applications.



29. This is an illustration of an intermediate exhaust tip extension that will be welded on to the OEM muffler tip. This extension will also work with some aftermarket exhaust systems depending on the diameter of the tubing.



30. Using a hacksaw (or equivalent), cut the exhaust tips off of the mufflers as shown. You will want to get as close to the mufflers as possible.



31. Weld the extensions to the OEM exhaust tips as shown in this illustration. Take care to make sure the extensions are concentric with the exhaust tips.



32. Weld the extended exhaust tips to the muffler as illustrated. This is an illustration of how the extended exhaust tip should be set in place in relation to the new rear valance.

NOTE: You will need to cut the extensions to your preference on length.



33. The red clips that are illustrated in the next step clip into these slots. These slots are located on the driver and passenger sides of the rear bumper.

CAUTION: These slots are easy to damage when re-installing the bumper.



34. Line up the red clips on the driver side and passenger side of the vehicle to the slots illustrated in step 33.



35. Center the bumper and push it onto the red clips until it snaps into place.



36. The body lines from the bumper to the quarter panel will be flush as shown.

37. The sides of the bumper have clips that line up with clips on the quarter panel.



38. Both the driver side and passenger side will snap into place, this will ensure that everything lines up correctly.



39. Replace all bolts in the wheel wells that were removed in step 4 with the Torx 20 socket and torque to 62 in-lbs (7 N-m).



40. Connect the tail light wiring harness electrical connectors on both side of the bumper.



41. Place the tail light wiring covers and re-install the pop rivets.



42. Apply the chip resistant film to the inside of the rear wheel wells behind the rear wheels.

43. The Installation of your LPE rear valance is now complete.

For additional product installation information and technical support, contact LPE or your LPE products distributor. You can also find technical support and usage discussions regarding this product and many other LPE products in our Internet forums:

<http://www.lingenfelter.com/LPEforumfiles>



Lingenfelter Performance Engineering
1557 Winchester Road
Decatur, IN 46733
(260) 724-2552
(260) 724-0422 fax
www.lingenfelter.com