



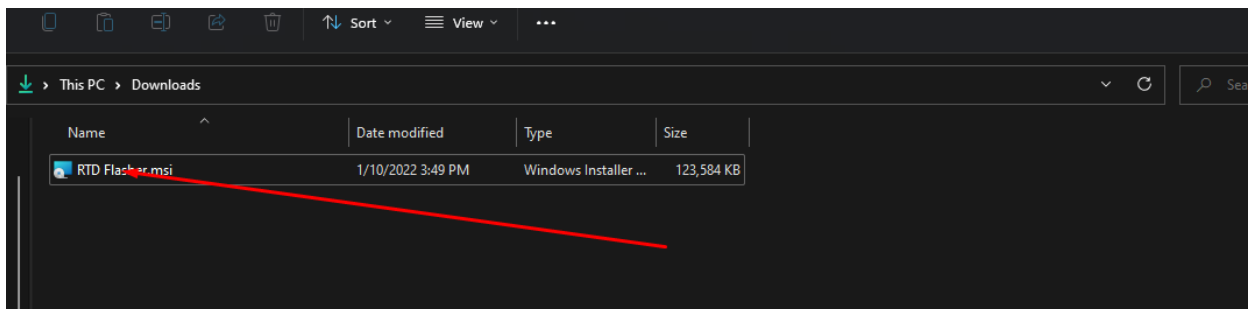
MAGNUSON NTERCOOLED SUPERCHARGER SYSTEM 2019+ Chevrolet & GMC Trucks Magnum DI 5.3/6.2L ECM CALIBRATION INSTRUCTIONS

Before you remove your ECM: <https://www.lingenfelter.com/e90.html> and download the following files:

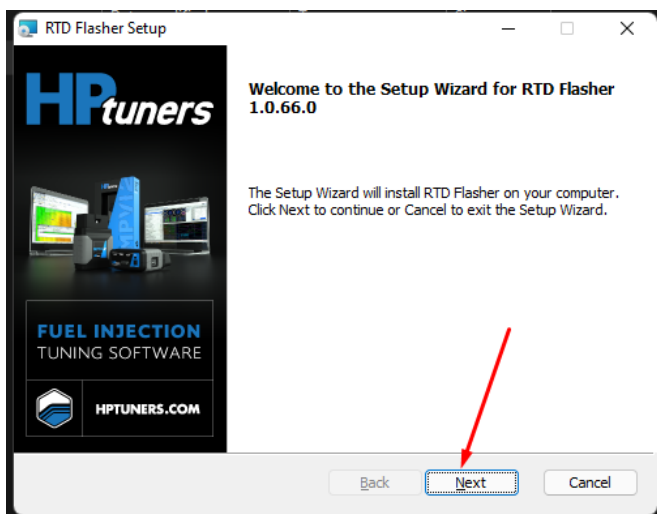
- If you are using an HP Tuners RTD please click the link below for the latest updates.
- <https://files.hptuners.com/rtd%20flasher/rtd%20flasher.msi>
- For the MPVI2 VCM Editor or VCM Scanner please click the link below.
- [http://files.hptuners.com/VCM%20Suite/VCM%20Suite%20\(Beta\).msi](http://files.hptuners.com/VCM%20Suite/VCM%20Suite%20(Beta).msi)

Proceed to install both versions of the software as follows:

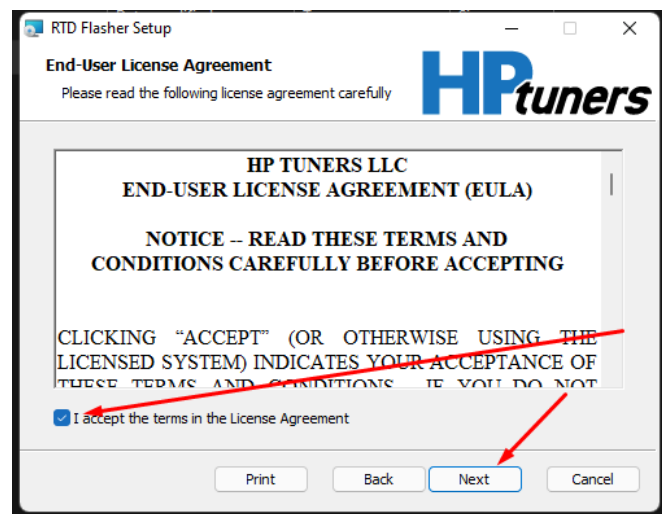
1. Verify in your Downloads folder for the RTD Flasher. Double Click RTD Flasher file downloaded



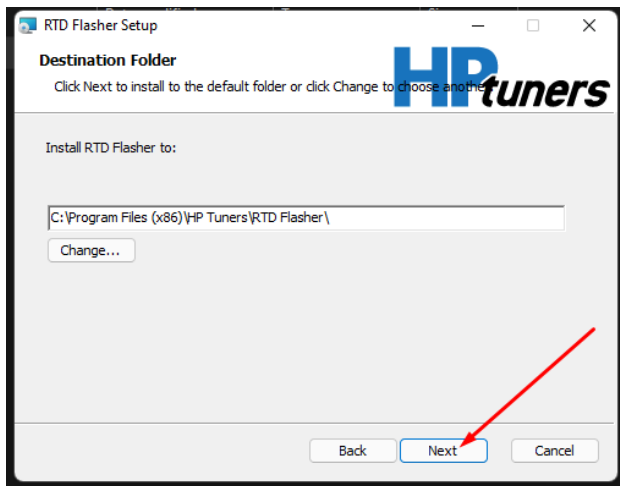
- i. Click Next



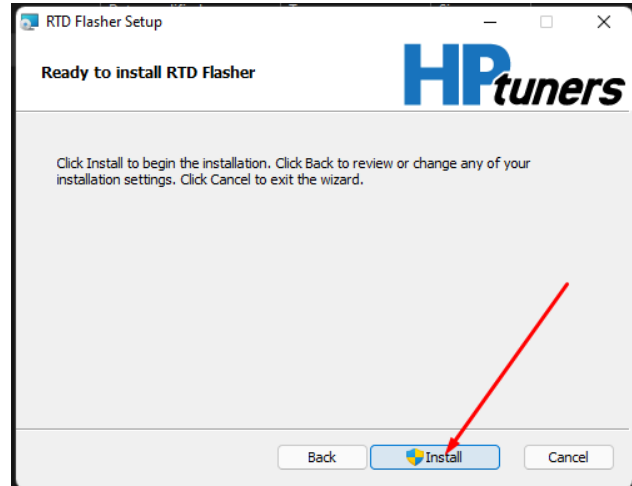
3. Click "I accept" and then Click Next



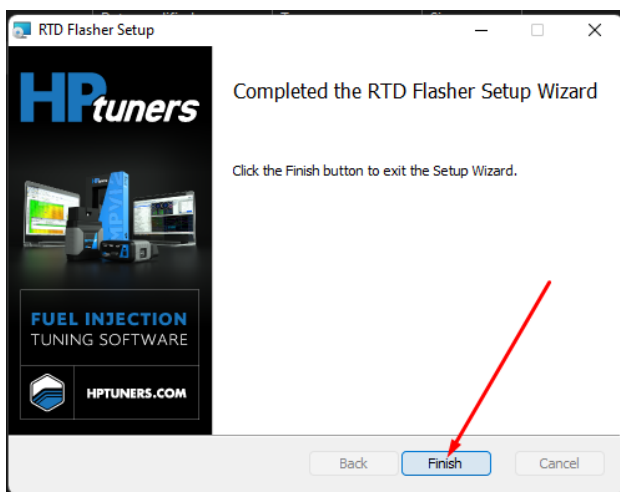
4. Click Next



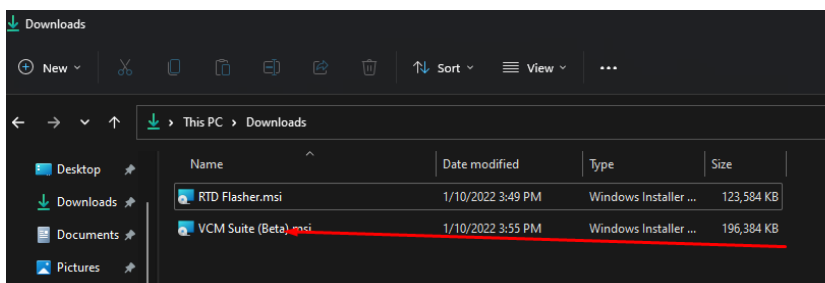
5. Click Install and Finish the Installation Process



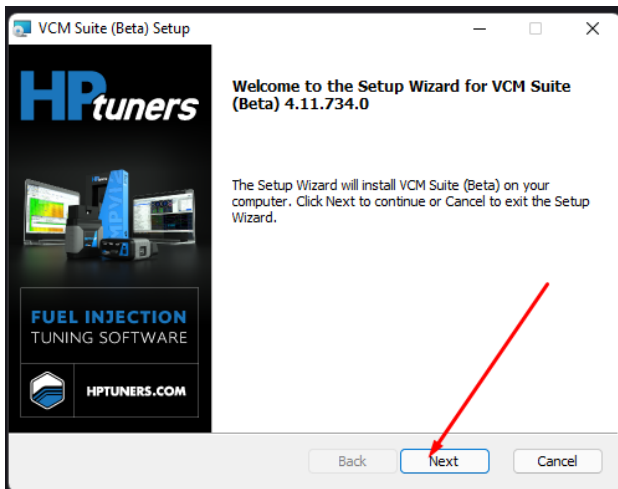
6. Click Finish



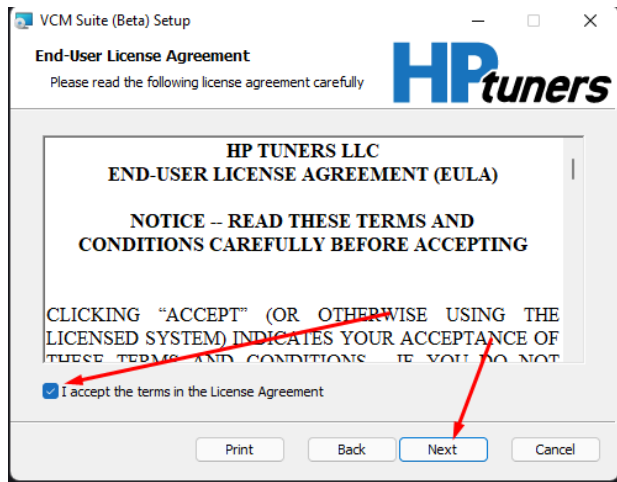
1. Find VCM Suite Beta on your Downloads Folder and Double Click



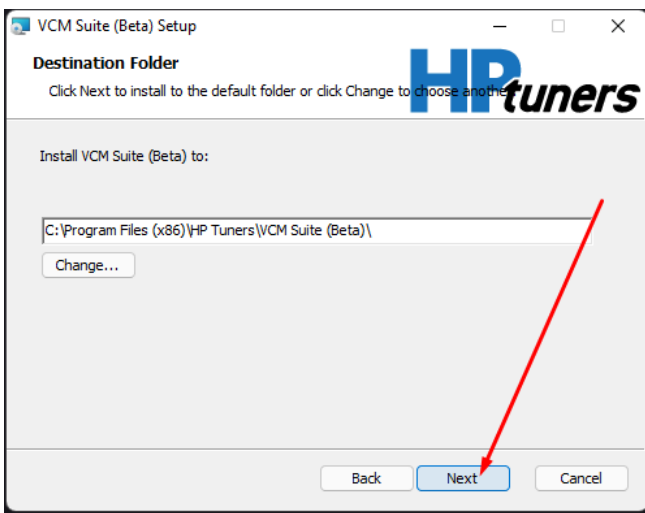
2. Click Next



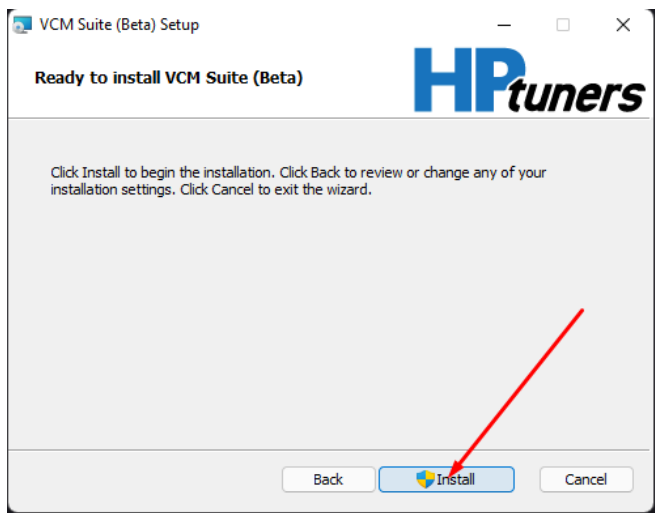
3. Click "I accept" and then Click Next:



4. Click Next

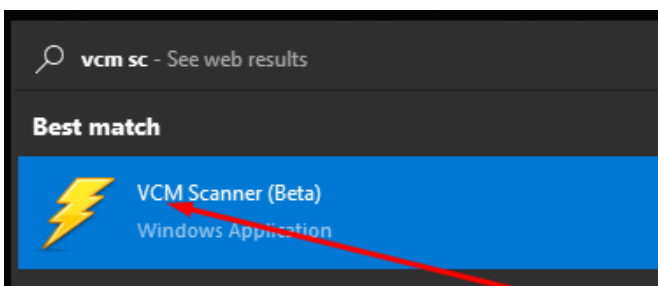


5. Click Install

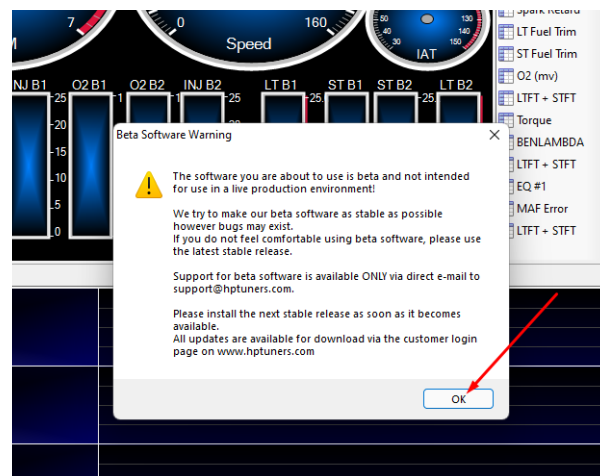


Software Installation has been completed. Now we will run the VCM Scanner so we can replace the ECM.

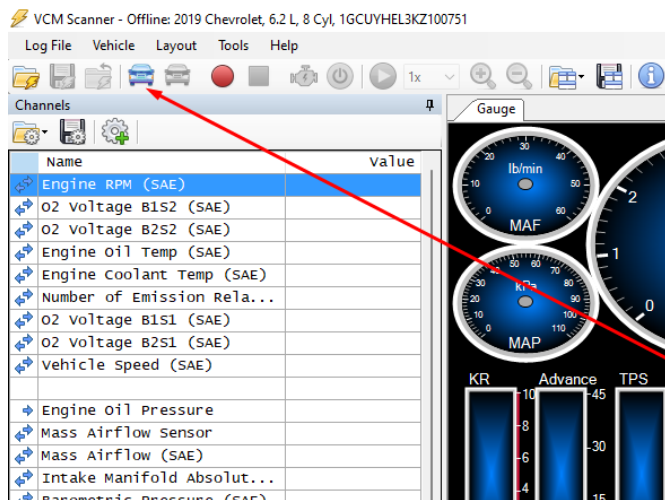
1. Open VCM Scanner



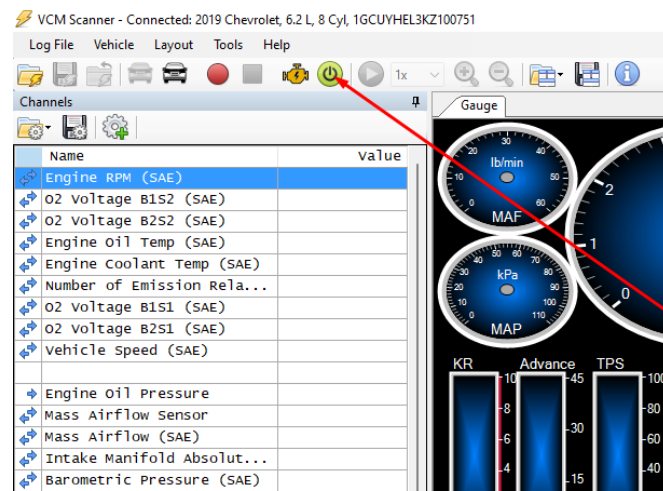
2. Click OK to Dismiss the Beta Prompt



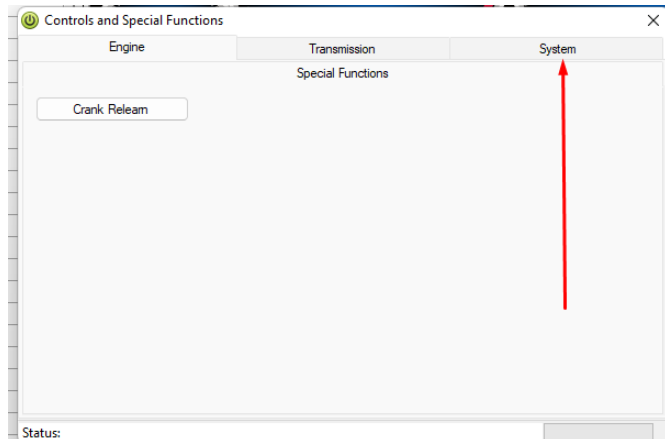
3. Click the Connect Vehicle Button Button



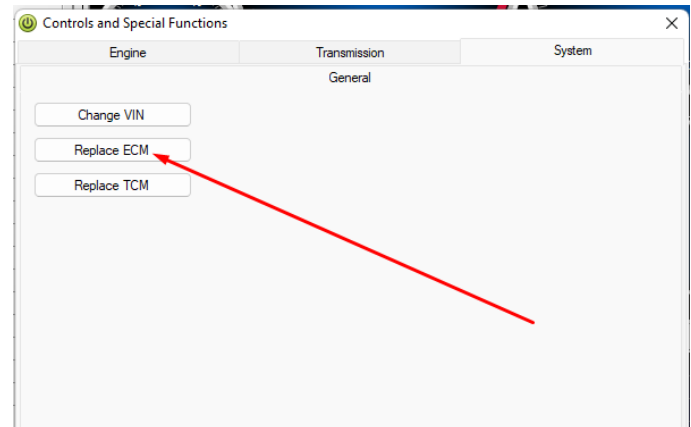
4. Once Connected Proceed to Click the Special Functions



5. Select the System tab

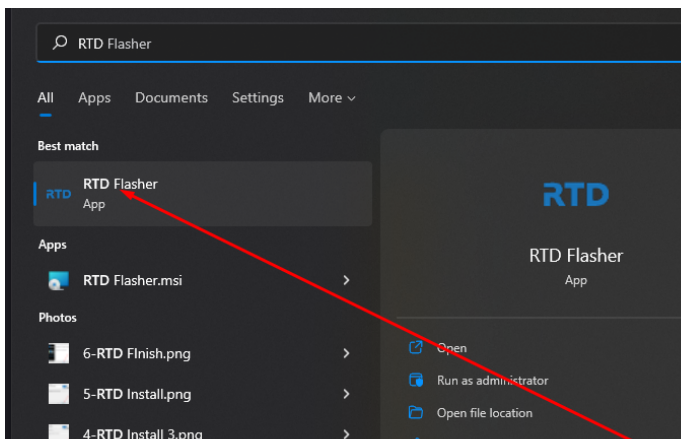


6. Select the Replace ECM button

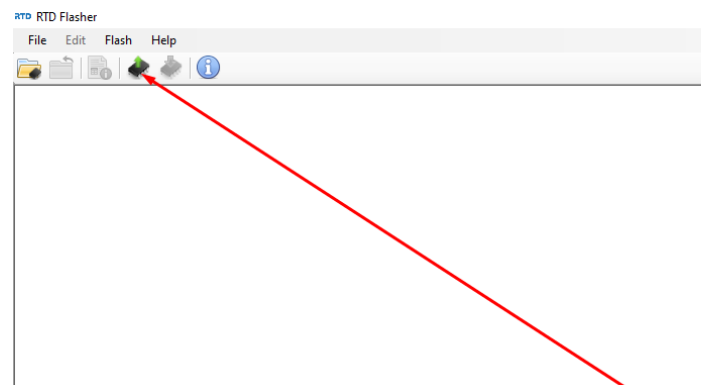


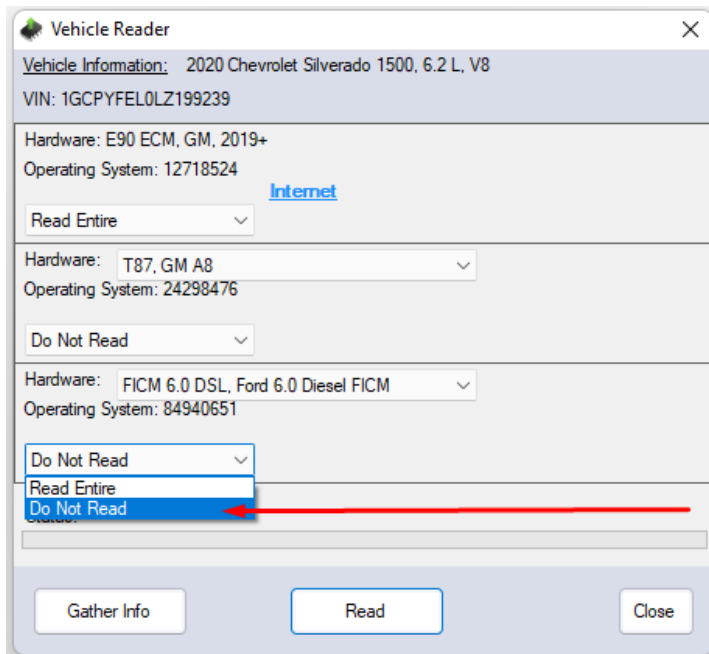
Once it is finished you may now REPLACE THE ECM from the VEHICLE. Repeat Step 6 above with the NEW ECM install and select New ECM when prompted. ECM replacement has been completed we now need to run the RTD software.

1. Now we will Start the RTD Software

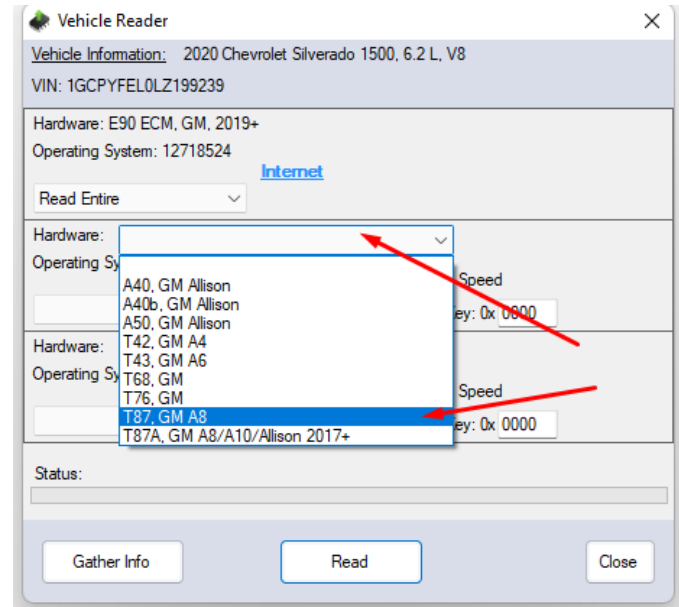


2. With the Device Plugged in, we will do a read of the calibration by hitting the read button

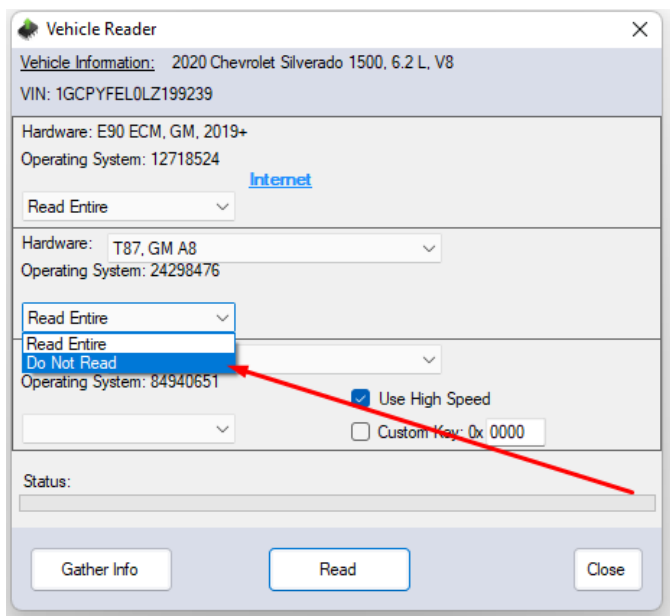




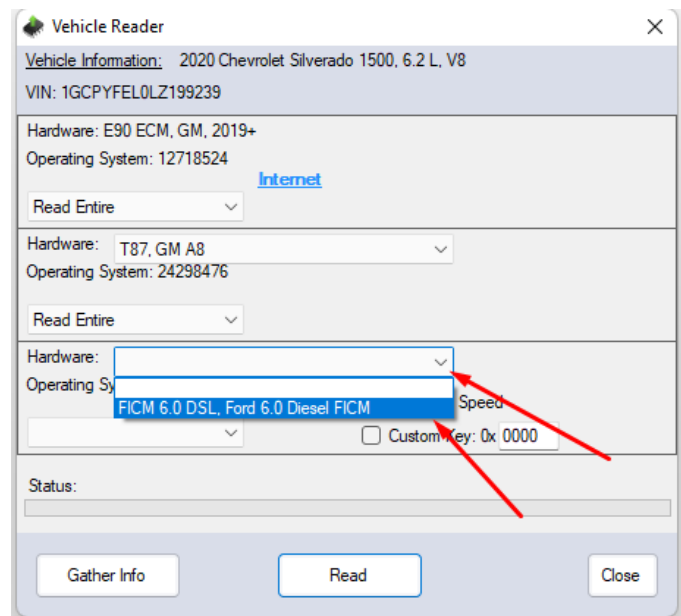
3. Click Gather Info.
4. Select T87, GM A8 in order to gather the proper read. HPT will not detect correctly.



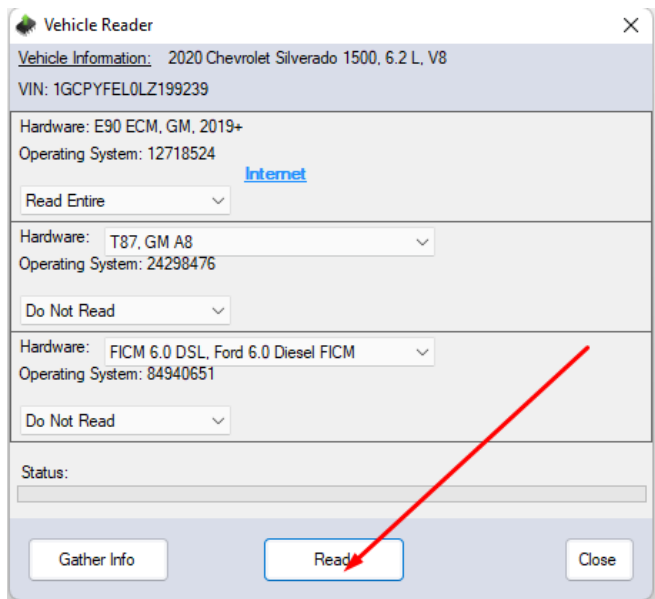
5. Select Do Not Read in order to gather the proper read. HPT will not detect correctly.



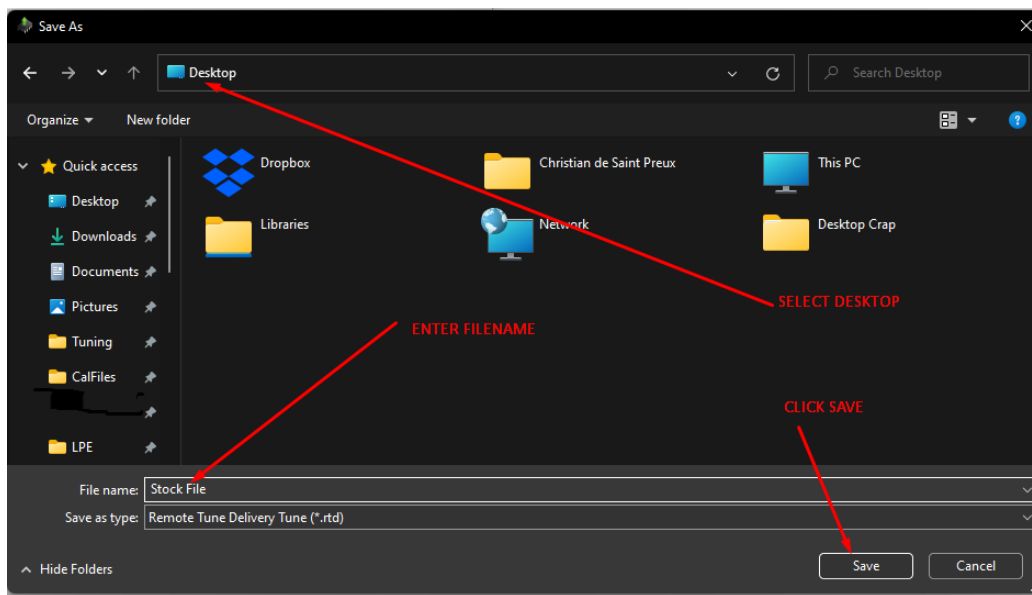
6. Final Selection



7. Click Read



8. Save on your desktop for easy access or any other folder of your choice.



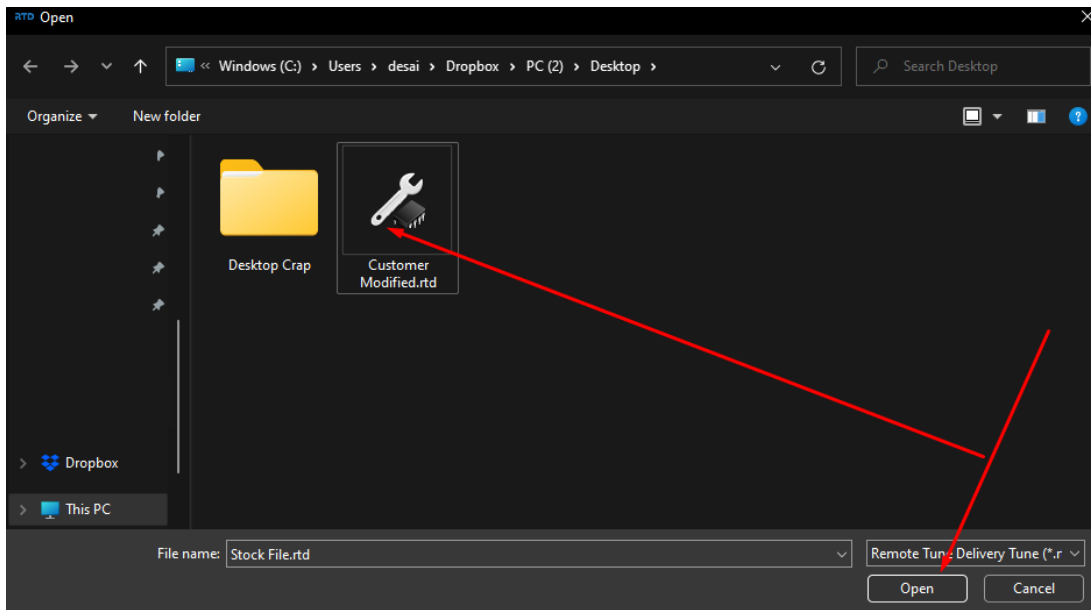
IMPORTANT FINAL STEP

Send this stock calibration file to cdspreux@lingenfetler.com and include the following information:

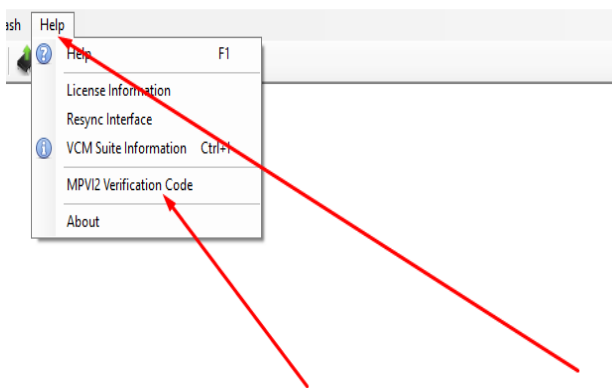
- Name
- VIN number
- Readout Stock Calibration
- Interface Serial Number

You will receive a modified file via a reply via email.

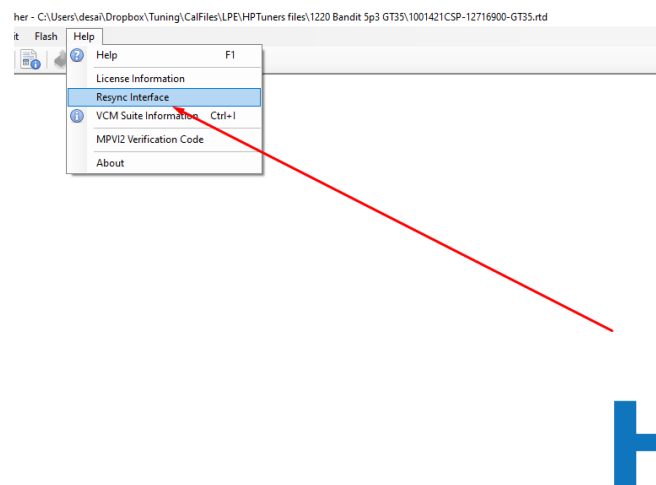
Save the file and follow the Instructions to open and flash it to your vehicle.



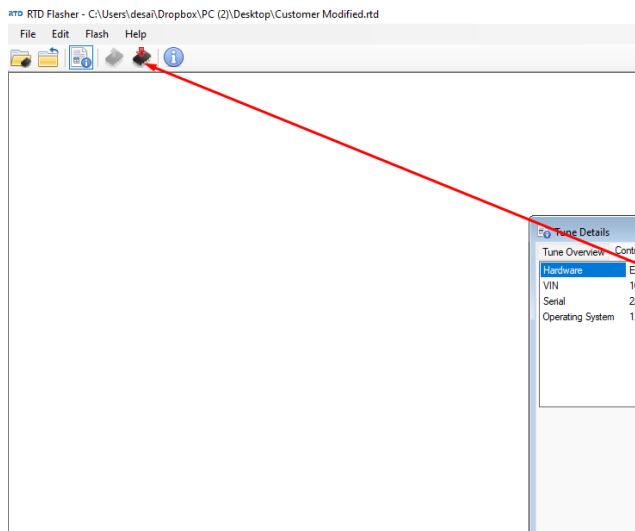
1. Copy the Verification Code sent via email, click Help, select MVPV2 Verification Code and paste code.



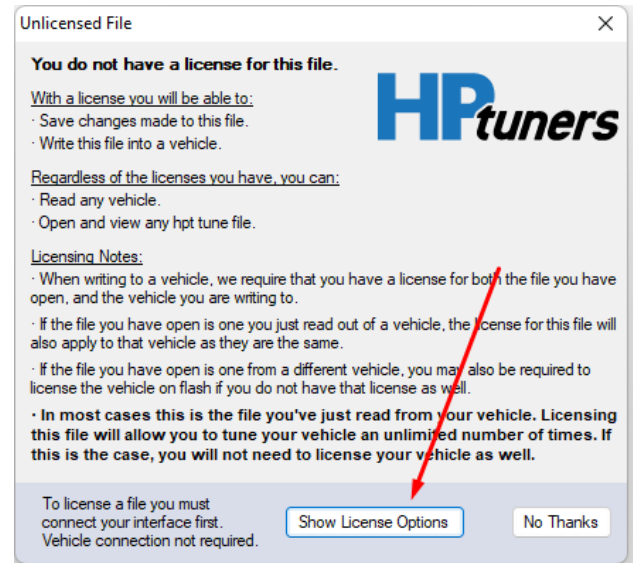
2. Click Help then Resync Interface to receive credits.



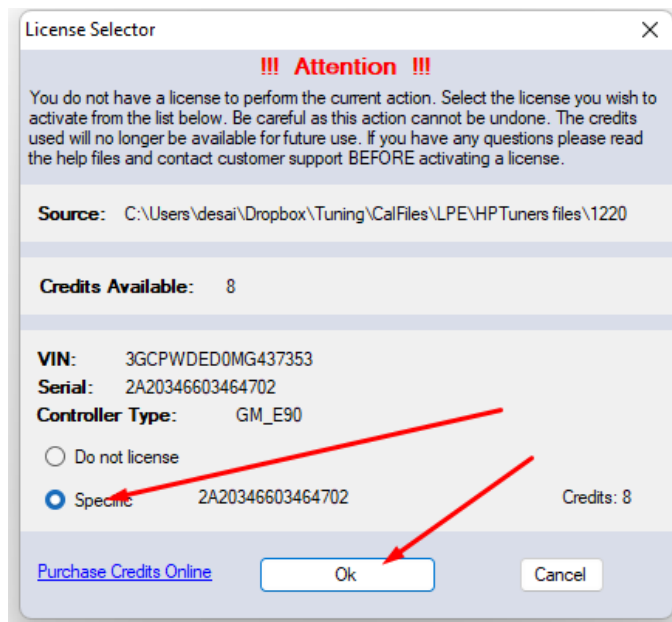
3. Click the Flash Button



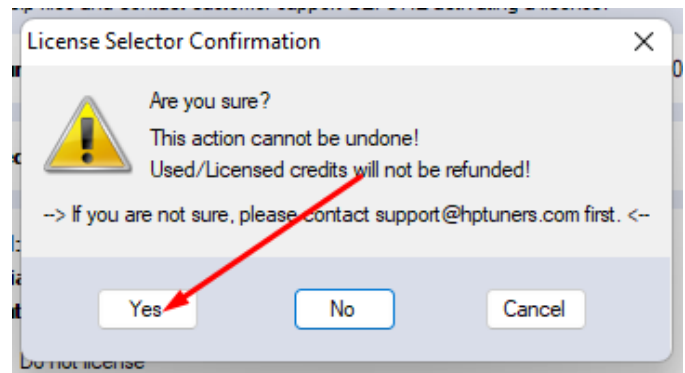
4. An Unlicensed File may pop up, if so click Show License Options.



5. Select Specific, then click Ok



6. Click Yes



1-

7. Hit the start button without pressing the brake pedal in order to get the vehicle in Accessory Mode.

8. Follow the on-screen instructions and then proceed to relearn the keys using the factory tools.

